

shhh!™ **Foam Products**
The **Silencer**™ **CORPORATION**

Silencer QuickLay

Universal Aerosol Adhesive
"Eco Friendly"

ADVANTAGES:

- Non-flammable
- Simple spray application eliminates trowels and rollers
- No solvents or hazardous chemicals
- "Zero" (calculated) VOC
- Very low odor
- Outstanding water resistance when dry
- Passes Air Quality Standards per California Section 01350
- CRI Green Label Plus approved
- Perfect for repairs

Foam Products Corp. Silencer QuickLay is a water-based aerosol adhesive recommended for installations of luxury vinyl tile, planks, sheets, VCT, Silencer LVT underlayment, carpet cushion, carpet tiles and cove base repairs over porous and non-porous substrates. It is particularly convenient since it can be used in occupied buildings and greatly reduces the handling and application requirements associated with conventional adhesives. Silencer QuickLay demonstrates highly aggressive grab and shear strength, and has outstanding water and plasticizer resistance.

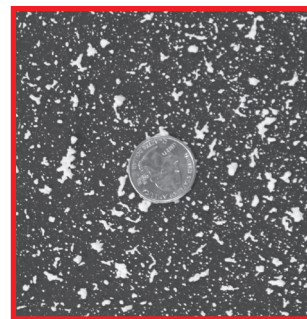
COVERAGE:

Rate of application depends on flooring product being installed
 180 - 200 square feet per can : Carpet Tiles, VCT
 140 - 150 square feet per can : Luxury Vinyl Tiles, Planks, Sheets
 Silencer LVT underlayment, and Carpet Cushion

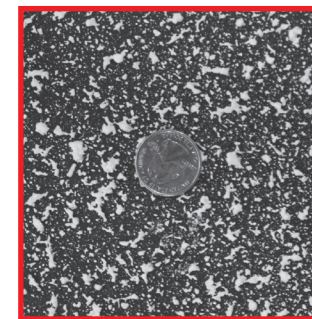
SUBSTRATE PREPARATIONS: Silencer QuickLay may be used on porous or non-porous surfaces, such as metal, wood, fiberglass, terrazzo, existing properly prepared vinyl composition tile and concrete substrates with up to 90% in-situ Relative Humidity as determined per latest version of ASTM F2170, and pH up to 10.0.

Follow concrete substrate preparation guidelines for resilient flooring as outlined in the latest version of ASTM F710. The substrate must be dry and clean. Remove any foreign matter that would interfere with a good bond. The installation site must be acclimated with HVAC in operation. The floor and room temperature, as well as flooring materials and adhesive, must be maintained at 65°- 95° F, and the humidity below 65% for 48 hours prior to, during, and after the testing and installation. Do not use on substrates that have been chemically cleaned.

**SHAKE WELL BEFORE USING
CONTENTS UNDER PRESSURE**



Proper Spray Pattern for Carpet Tiles & VCT
Approx. 200 square feet per can



Proper Spray Pattern for LVT, LVP, Sheets,
Silencer LVT Underlayment, carpet cushion
Approx. 150 square feet per can

APPLICATION: Shake can well. Standing in an upright position, point can downwards toward the floor, press the side of the nozzle tip as you slowly walk back and forth. DO NOT use a sweeping motion as this will create an uneven coverage. Also, avoid overlapping. Allow the adhesive to become tacky to the touch (15-20 minutes) with little or no transfer to fingers. **Open time** will vary depending on the coverage, substrate porosity, temperature and humidity conditions. **Working time** with the adhesive should not exceed 4 hours.

FLOORING INSTALLATION: Roll flooring immediately after final installation is complete with a 75-100 lb roller for flooring. When using the Silencer LVT underlayment or carpet cushion, also roll the floor after securing these products to the subfloor. Sheet flooring seams may be heat welded immediately after installation. Normal traffic may be allowed as soon as the installation, finishing, and clean-up are completed.

SAFETY AND CLEAN UP: Wet adhesive overspray or drips should be cleaned with soap and water on a clean cloth. Dried adhesive may require the use of a solvent adhesive cleaner. Between uses, clean the spray tip immediately with a clean wet cloth to prevent accumulation of dried adhesive. Empty aluminum spray cans should be relieved of excess pressure and recycled or disposed of in accordance with local requirements.

WARNING:

- Do Not Puncture or Incinerate
- Keep Out of Reach of Children
- Do Not Expose to Temperatures Exceeding 115°F. (46°C)
- Prolonged Exposure to Heat or Sun May Cause Container to Burst
- Do Not Allow Product to Freeze

FIRST AID: Avoid contact with eyes and skin. For eye contact, flush thoroughly with water for 15 minutes and get immediate medical attention. For skin contact, wash area with soap and water. If swallowed, do not induce vomiting; get medical attention immediately. If inhaled, remove person to fresh air; for difficulty breathing, get immediate medical attention.

SHELF LIFE: 1 year from the manufacturing date, in an unused container.

For technical, environmental, LEED, material safety data and expanded usage information visit www.foamproducts.com.

Manufactured in the USA for
Foam Products Corp.
350 Beamer Road Calhoun, GA 30701
Telephone: 800-526-3626
24-hour Emergency-Chemtec: 800-424-9300



Net Contents: 22oz
www.foamproducts.com

LRD041213