



General Installation Instructions

Laminate – Drop & Lock installation - 2G

A. INTRODUCTION

Laminates and other wooden material acts after the surrounding climate, the main factor is the **relative humidity (RH, %)**.

High humidity means the wood - expands; low humidity - it shrinks, as does your furniture and hardwood floors.

Due to this natural property you **must** attend to the instructions below.

B. CHECKLIST - TOP 10.

You find additional information to each section further below:

1. Store the packages in the future room climate and open package after package when you install.
2. This floor will be **floating installed**, i.e. keep always a **distance to all fixed construction parts**.
3. **Check your floor construction**
It must be dry (**measure always!**), clean, firm and even, eliminate always wall to wall carpets and investigate the floor.
3. Choose underlay materials (read carefully below!) according to your own situation - **all floors are unique!**
5. **Measure** the room, decide installation direction
Note the limitations as per below - due to natural behaviour of wood!
6. Floor heating - see special advices and requirements
– follow the instructions from the system supplier!
7. Install according to section E below, Work clean! Please note panel release method.
8. **Check you floor continuously** during the installation
Installed defect boards can easily be replaced - cannot be complained!
9. Keep always the **right room climate 45-60 % RH at 18-24 °C**.
10. Maintain/clean your FLOOR correct and you will enjoy the floor.

C. GENERAL INFORMATION

I Preparations

Store your unopened floor packages well spread (not on a pallet) in the same conditions (45-60 % RH at 18-24 °C) as it must have after installation, for at least 2 days.

Tools needed:

Spacers, a hand block, a hand saw or an el. jig-saw, a pencil, a measuring tape, a drill, a chisel + hammer.

Investigate your sub floor:

Wall to wall carpets must be eliminated. You can install on all kind of construction floors, if they

are dry, flat, fixed and clean, for example on old wood floors, cement/concrete floors, ceramic tiles, PVC etc.
If other floor top layers, please contact your distributor.

Dry: Measure and file always cement screed /concrete/anhydrite with adequate test instruments. Cement screed/Concrete need long time dry - in worst cases up to one year.

Requirements, moisture content limits.

For concrete sub floors:

Calcium/Chloride test (US market)

A conservative but generally recommended allowable amount of moisture emission as expressed by the calcium chloride test is 3.0 pounds per 1,000 square feet per 24 hours at the time of the installation of the flooring. A note of caution: Use care in lid dealing and removal of the dish, and weighing as exposure to atmosphere will dramatically effect the results. (www.woodfloorsonline.com).

	< 2% CM (CM-method)	or
	≤ 95 % RH	see table below:
<u>Concrete slab</u>	<u>Measure depth</u>	<u>Marks</u>
On the ground	0,4 H	Single sided drying
<u>In beams</u>	<u>0,2 H</u>	<u>Double sided drying</u>

H = thickness of the concrete construction, screeding excluded.

It is recommended to contact a certified company (in SE RBK- Inspector) for a correct test of the RH-humidity.

For anhydrite < 0,5 % CM

PLEASE note that all types of cement screed/concrete/tiles sub floors require a moisture barrier – an ageing resistant PE - plastic film, **min. 0,20 mm thick**.
(sd-value ≅100m) overlapping minimum 20 cm and taped.

For wood floors the moisture content must be ca 8 % (equivalent to ca 50 % RH and 20 °C).
Measure and file.

Please note that sub floor construction boards, for example particle board/plywood at installation may have a too high moisture content.
Measure, file. Let dry, if necessary!

Flat: Measure always with a vertical positioned floor plank.
Unevenness ± 2 mm over 2m must be levelled.

Tip: use flooring paper or newspapers to level your sub floor – never use foams or other soft materials.
Check always the floor afterwards.

Firm and Clean: Cross check old wood floors, nail/screw to eliminate squeaking.
Brush or vacuum clean your floor - work clean!

II Sound insulation

Sound insulation material must be installed (over the PE-plastic film, if so required).

Use flooring paper, 2 mm cork, HD-foams (over 30 kg/m³) 2-3 mm or other approved underlay materials.

III Floor heating

Installation over sub floor heating - some important issues.

Max allowed temperature on top of the laminate floor is 27 °C.

Please note that normal loose carpets insulate i.e. increase the floor surface temperature about 2 °C!

Important: Follow the heating regulation recommendations given by the system supplier.

Please note that a 0,2 mm PE-plastic film always must be placed on top of the construction floor either made of cement screed /concrete, etc or also over wood!

Separate floor areas not having sub floor heating, with expansion joints.

The Swedish flooring organization GBR has produced an english document “Wooden floors over under floor heating”. This can be bought at GBR or downloaded from their homepage www.golvbranschen.se

D. Installation preparations

I. General

Measure the area to be installed and define the installation direction.

It is recommended to install the length direction of the planks parallel to the main light direction. The board width of last row shall not be less than ca 35-50 mm.

If so, adjust the width of the first row to be installed.

When measuring take the **free gap requirement of about 8-10 mm** of the floor perimeter into account. In narrow hallways, install the floor parallel to the length way.

II Floating installation

Your floor is made to be installed floating without glue:

Leave an open expansion gap of min 10 mm around the whole perimeter (use the distance wedges), i.e. also at pipes, stairs, columns, doorframes and thresholds. In large rooms, calculate 1,5 mm / m floor around.

Install maximum 10 m length /width; over this: allow for an expansion gap, to cover with a profile of wood or metal.

The floor must be able to move free – do not connect or install tight to any construction part.

Rooms with off square areas like for example L-,F-, T-, U- shapes, separate the areas with an **expansion joint**, especially in door openings.

At any question contact your distributor for further information, installation at doors, glue down, etc

Claims are visible defective floor panels must be made prior to installation

Each board should be inspected to ensure that the quality is acceptable. No claims relating to surface defects can be accepted after installation.

E. Installation instructions of the floor panels

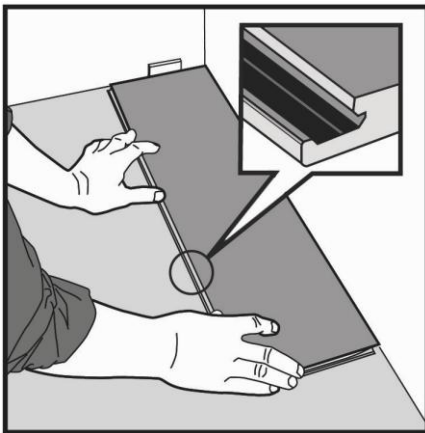


Fig 1.

First plank, first row.

Start in a left-hand corner of the room with the locking strip (groove) facing the room.

Remember to leave a ca 10 mm gap between the wall (left) and the board.

It is practical to adjust the gap between the long sides and the wall later, when three rows have been installed.

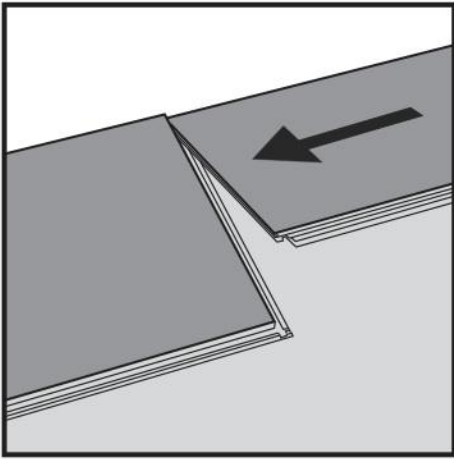


Fig 2.
Second plank, first row
Place next floor board tight to the short end of the first one in the corner.

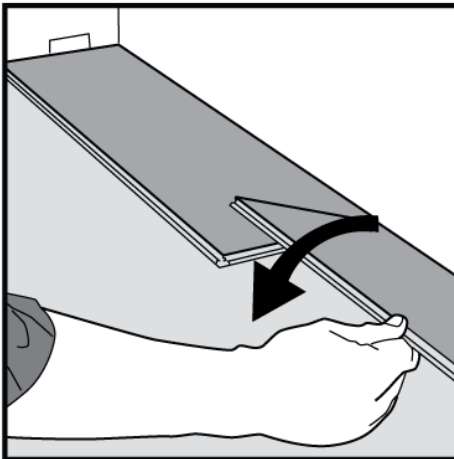


Fig 3.
Then fold down with a single action movement. Make sure the long sides of the planks make a straight line. Complete the first row in the same way.

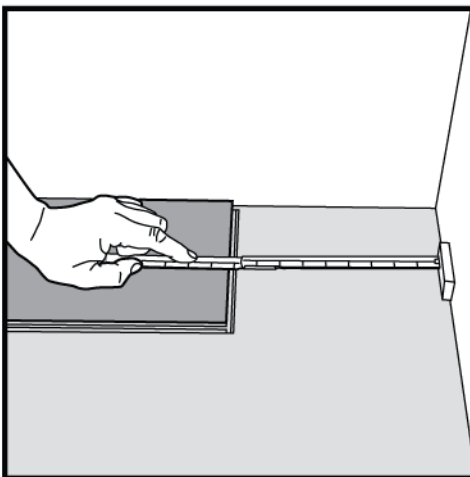


Fig 4.
At the end of the first row, put a distance 8-10 mm, to the wall and measure the length of the last plank to fit.

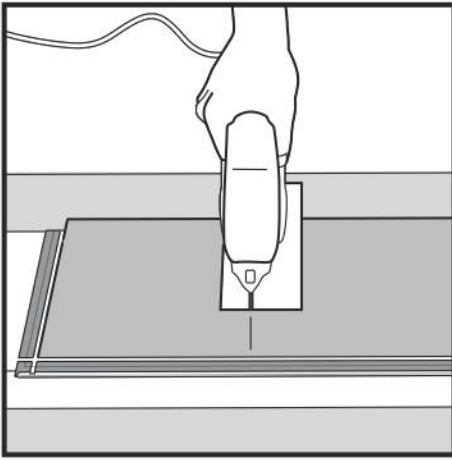


Fig 5.
Cut with a jig saw - hardwood turned down or
with a hand saw with the hardwood visible.



Fig 6.
Second row
First plank min length: half of full length panel.
Put a distance against the wall.

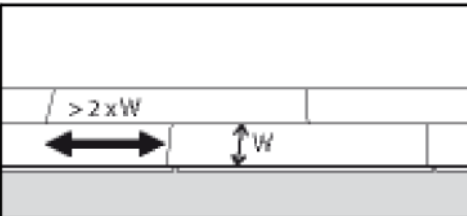


Fig 7.
General.
Minimum distance between short ends of planks in
parallel rows shall not be less than ca 2 times the
width (W) of the panel mm.

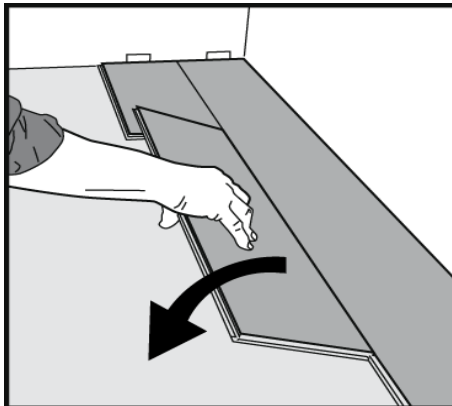


Fig 8.
Second plank second row.
Place the floor board **tight** to the short end of the
previous panel and fold down in a single action
movement.

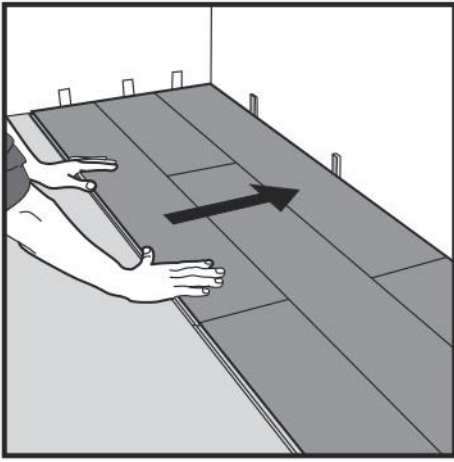


Fig 9.
After 2-3 rows.
Adjust the distance to the front wall by placing distances
8-10 mm.

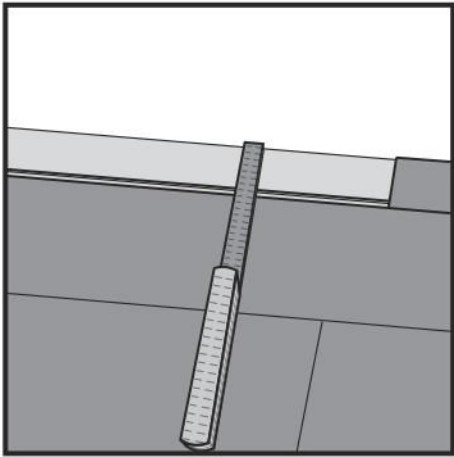


Fig 10.
Last row (and perhaps also first row).
Minimum floor board width 35 mm.
Remember distance to wall 8-10 mm.
Tip! Put a distance before measuring
Cut the panels lengthwise and glue the short ends.

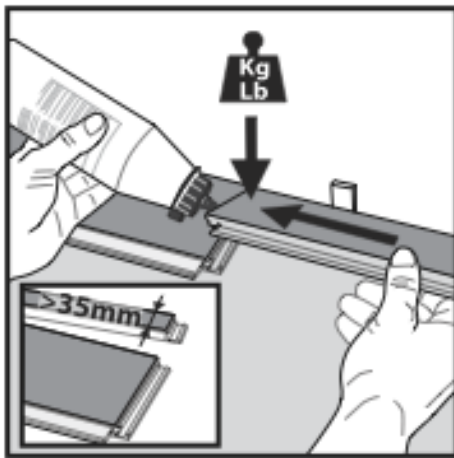


Fig 11.
Joining length cut panels. First/last row(s).
Glue the joint with white glue, put a weight over until
the glue has hardened.

Special installations

Horizontal installation

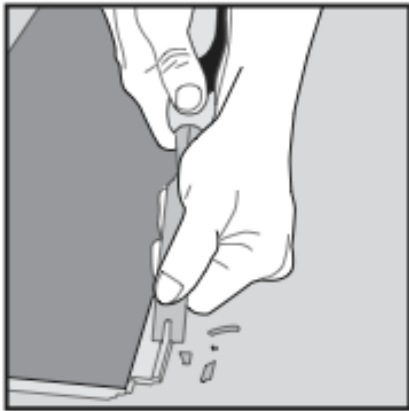


Fig 12.

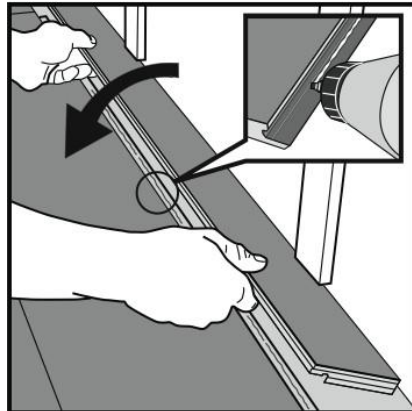


Fig 13.

Cut off the locking element with a chisel, put white glue (PVAc) on the adjusted strip and push the planks horizontally together. If necessary place some spacers between last board and the wall during the hardening time of the glue.

Radiator pipes

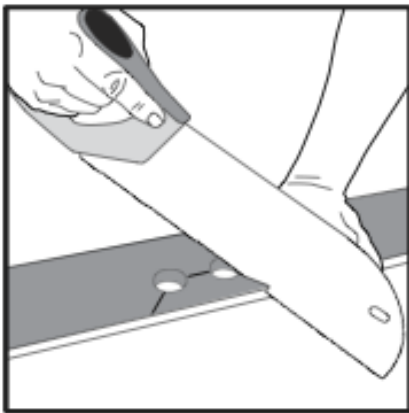


Fig 14.

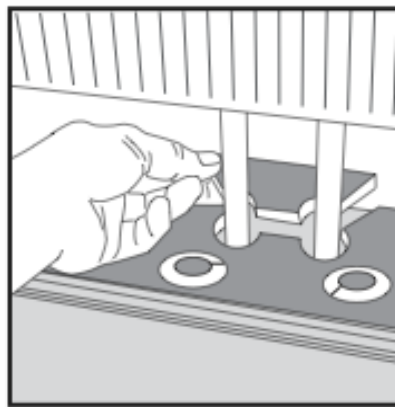


Fig 15.

Installation at for example radiator pipes.

Mark the centre of the holes and drill the hole with a diameter 20 mm bigger than the pipe diameter (= 10 mm gap around), cut as shown. Install the floor plank.

Put white PVAc glue on the cut piece and replace.

After installation place the washers, shown in the picture, around the tubes to cover the hole.

Others

Your floor can be very easy disassembled (angle up at short ends opposite the installation way, as shown in fig 8) which enables simple replacement during installation and also during use.

The mouldings must be fixed to the walls (never to the floor).

F. After the installation

You can use the floor immediately after installation.

Room climate – humidifier or de-humidifier needed ?

At all times, the recommended room relative humidity (RH) of 45-60 % and temperature of 18-24 °C should be kept.

If necessary install a humidifier/dehumidifier to ensure the best climate for yourself, furniture and your floor.

If the climate is not kept or correct installed, by natural properties the floor can show fine gaps, at dry climate also concave (cupping boards) or at high RH%: convex boards.

Cleaning and maintenance

The floor should be cleaned by using a vacuum-cleaner or brushed.

If required, wipe with a damp-dry (well squeezed) cloth.

Any water spilt accidentally must be wiped off immediately.

Laminate Cleaner Recommendation: Bona X Laminate Floor Cleaner or equivalent.

Floor protection furniture, entrances

Stick felt pads to chair and other pieces of furniture legs.

Place doormats at out door entrances.